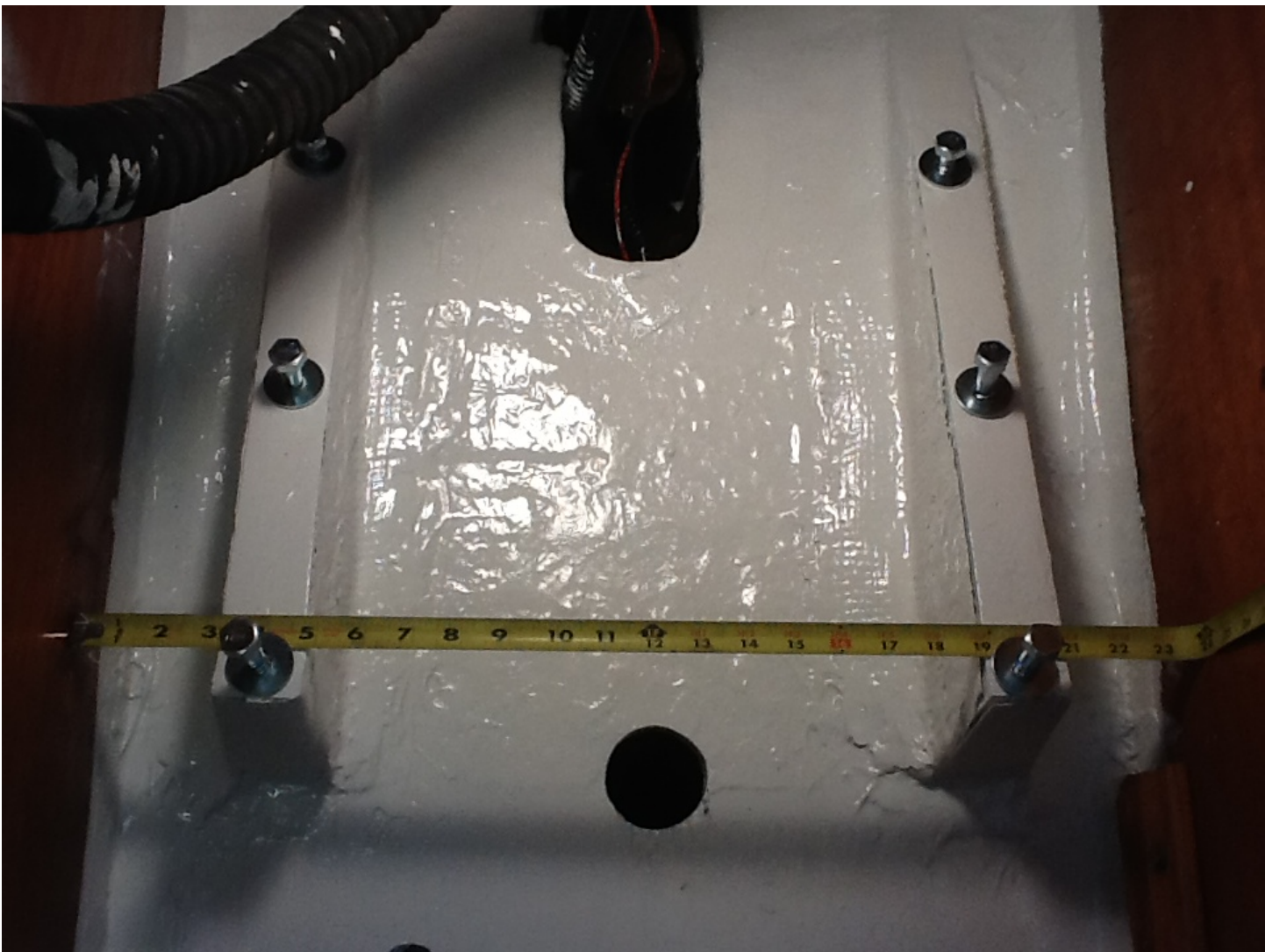
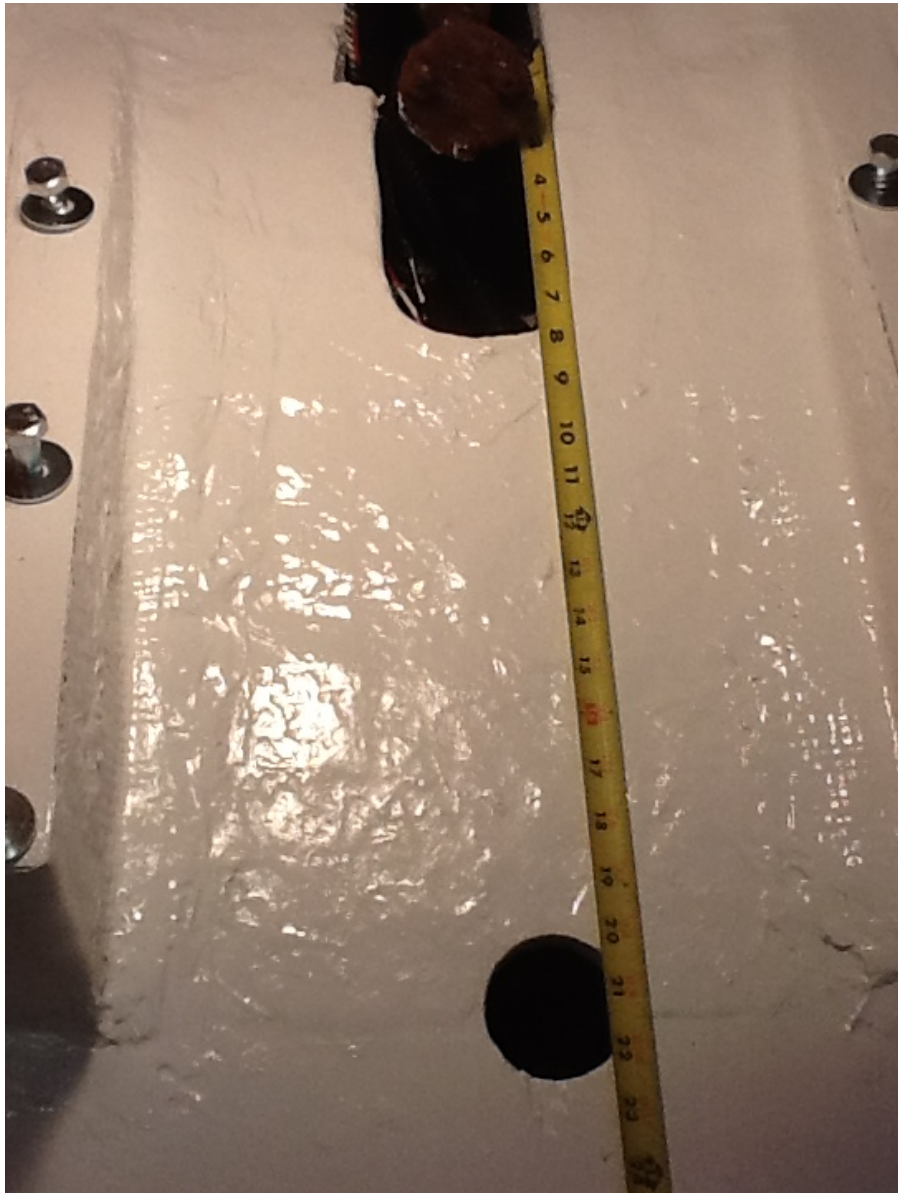
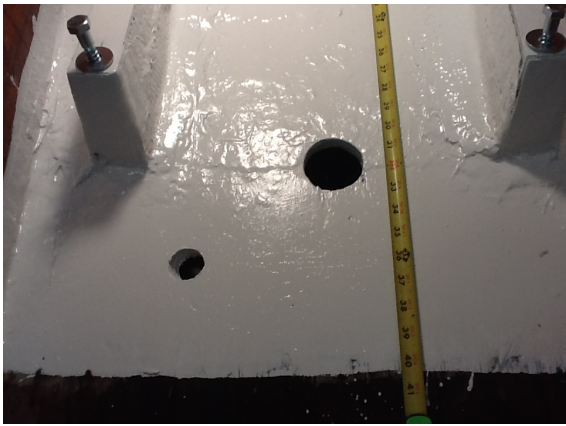


COLUMBIA 24 100ibl Project

Engine Compartment & 48v, 120 Amp Lithium Battery System



- The engine compartment is roughly 24" wide and 40" long.
- The mounts are roughly 15" long and are set 3" in on each side.
- There is roughly 14" of space between the mounts.



- The 3/4" shaft extends about 3 1/2" out of the stuffing box.
- Roughly, there is a space of 9 1/2" from the back of the engine compartment to the front of the stuffing box.



- Tentatively, the battery configuration will consist of 12, 12v, 40 Ah Lithium batteries – Valence's UX-P.
- There will be 4 batteries just aft of the engine compartment; 4 batteries in front of the engine mounts; and 2 batteries on each side of the electric drive.
- System will consist of 3 banks of 4, 12v batteries series for a 48v, 40 Ah bank. All banks will then be run in parallel to bring amp-hours up to 120 Ah at 48v.



- Tentatively, the battery wiring will follow the following diagrams:

